

*supereal.*





# **Dommeldange**

**apartment – 3 bedrooms**

**202 m<sup>2</sup>**

**2.980.000 €**

*For sale by Supereal. Duplex in the prestigious residence “Le Diamant”!*

*This residence, result of a project led by Metaform Architecture, has no equal. Awarded many times, it blends in with nature and its tricentennial trees. It stands out in the Luxembourg’s landscape, protected by an aluminum sheath and with large openings that draw the eye to the sky. Its extraordinary interior volumes reflect its exceptional exterior geometry.*

*This magnificent duplex of 202 sqm with impeccable finishes offers on the upper level a mezzanine that overlooks on one side a 50 sqm living room with access to a terrace with a view of the city center and the “Diamant” green roofs.*

*On the other side a 60 sqm kitchen and dining room, as well as a separate toilet and a served entrance by an elevator.*

*The lower level includes a second entrance, a master bedroom with a shower-room, a bathtub and a toilet, two additional bedrooms, a second shower-room and a separate toilet.*

*Three parking spaces and two cellars are available in the basement.*

*This house is available immediately.*

*The area of Dommeldange provides direct access to the city center, the Kirchberg business district, as well as the highway, the airport, and beautiful walks in the nearby forests.*

*Fees are paid by the seller. Please contact our fantastic staff if you require any additional information or a property estimate! Supereal. smart real estate services.*

.....

**À vendre par Supereal. Duplex hors du commun au sein de la prestigieuse résidence “Le Diamant” !**

*Cette résidence, fruit d’un travail mené par le cabinet d’architecture Metaform ne connaît pas d’égal. Primée à de multiples reprises, elle fait corps avec la*

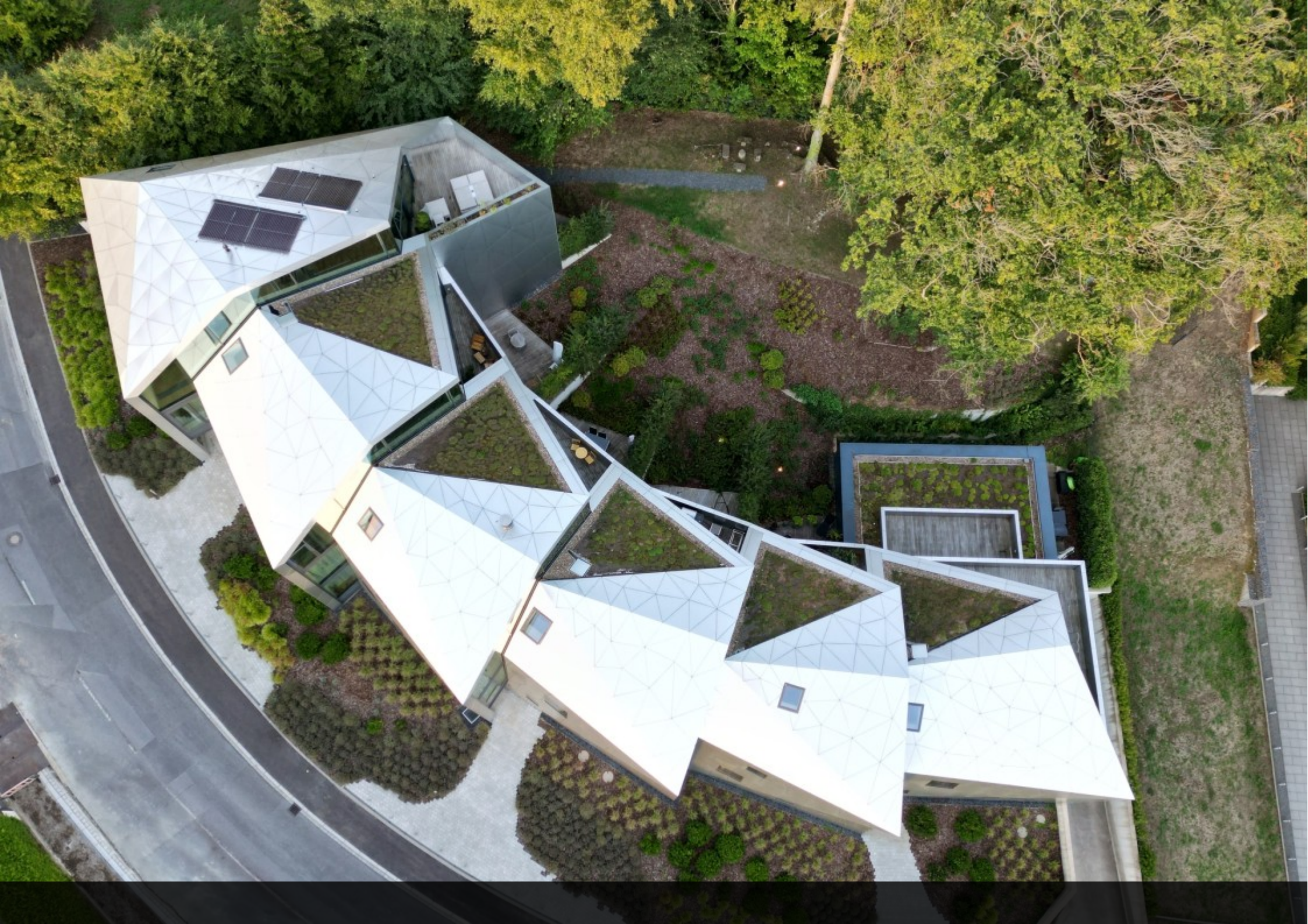
























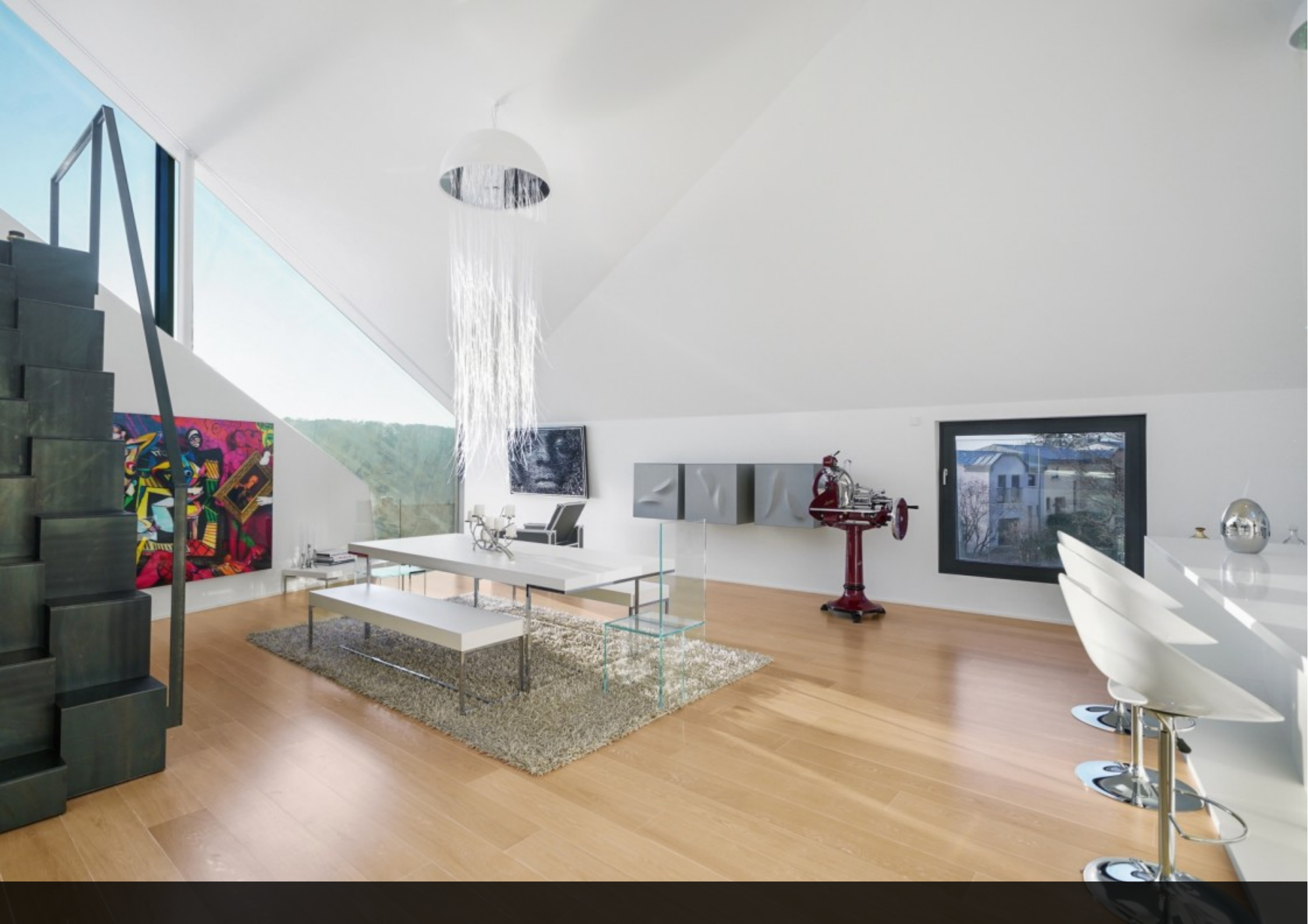
























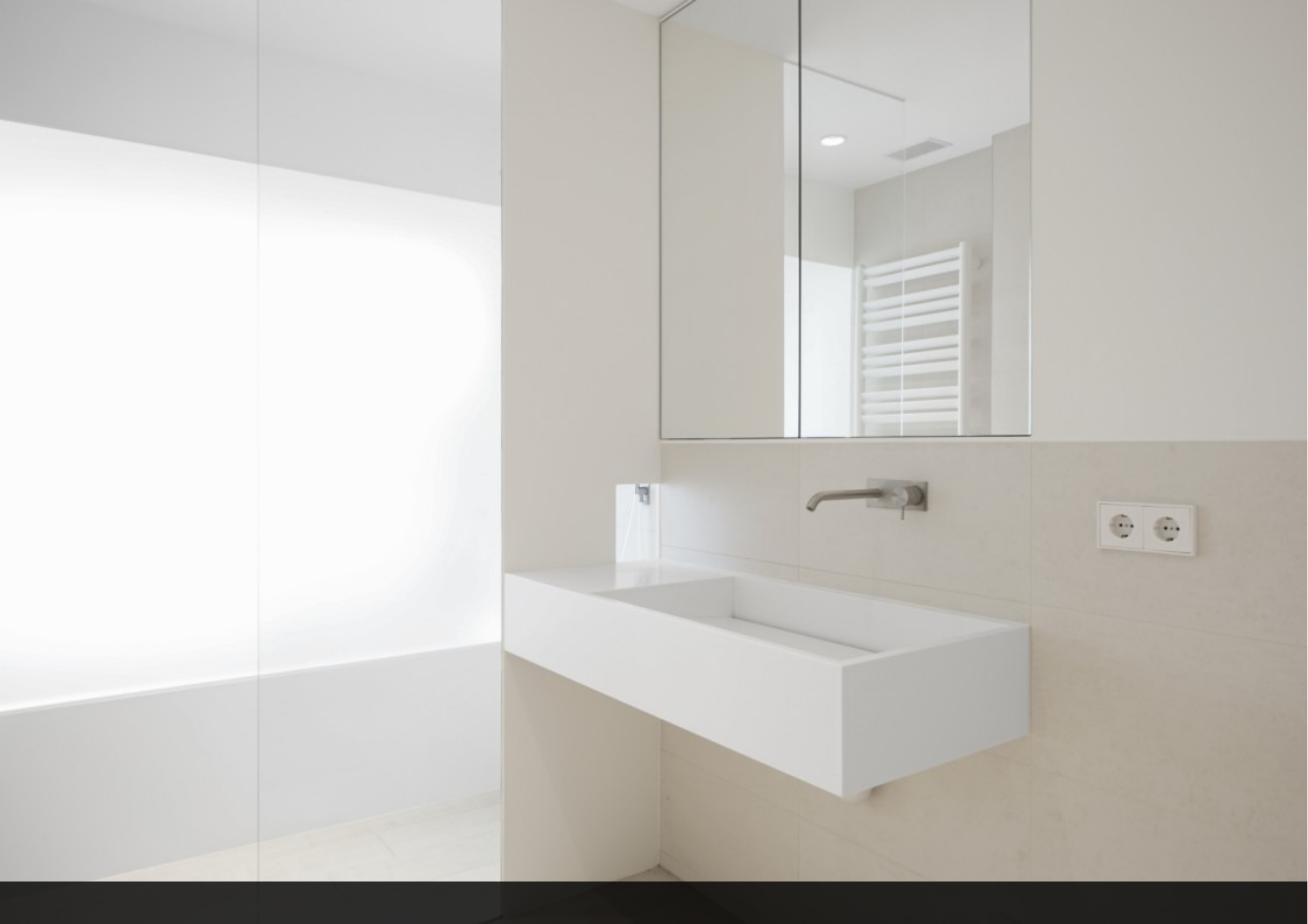


















**supereal.**

*smart real estate services*

+352 26 26 26 66  
hello@supereal.lu  
55 rue de la vallée  
L-2661 Luxembourg