

*supereal.*

*deal.*



# **Bridel**

**house - 5 bedrooms**

**350 m<sup>2</sup> - 4.19 ares**

**2.395.000 €**

*For sale by Supereal. Exceptional house with swimming pool in Bridel!*

*This high-end construction from 2019 with generous volumes, offers a total of ± 350 sqm and ± 255 sqm of living space, on a plot of 4.19 ares in the heart of a privileged and green environment.*

*Located on a quiet dead-end street called Impasse Flamo, this exceptional semi-detached property offers on the ground floor an entrance with wardrobes, a living room of ± 60 sqm flooded with light through its huge windows, an equipped kitchen with access to a terrace of ± 20 sqm, and a wooded garden with a heated swimming pool. Additionally, there is a bedroom with a shower room and a separate toilet.*

*On the 1st floor, the night hall serves a master suite of ± 28 sqm with bathroom, shower, and toilet. There is a second bedroom with its own shower room and two additional bedrooms of ± 20 sqm each, which share a shower room with toilet. Another separate toilet is located on that floor.*

*In the basement, there is a garage of 55 sqm which can accommodate four cars, a large cellar, a laundry room, and a technical room.*

*Designed by CCArchitectes and equipped with generous windows, solid oak flooring with underfloor heating, double-flow ventilation, alarm system, all with meticulous finishing and an AAA energy efficiency rating, make it a high-end property on an exceptional location.*

*Bridel is one of the most sought-after locations for its proximity to nature and quick access to all commodities and to Luxembourg City.*

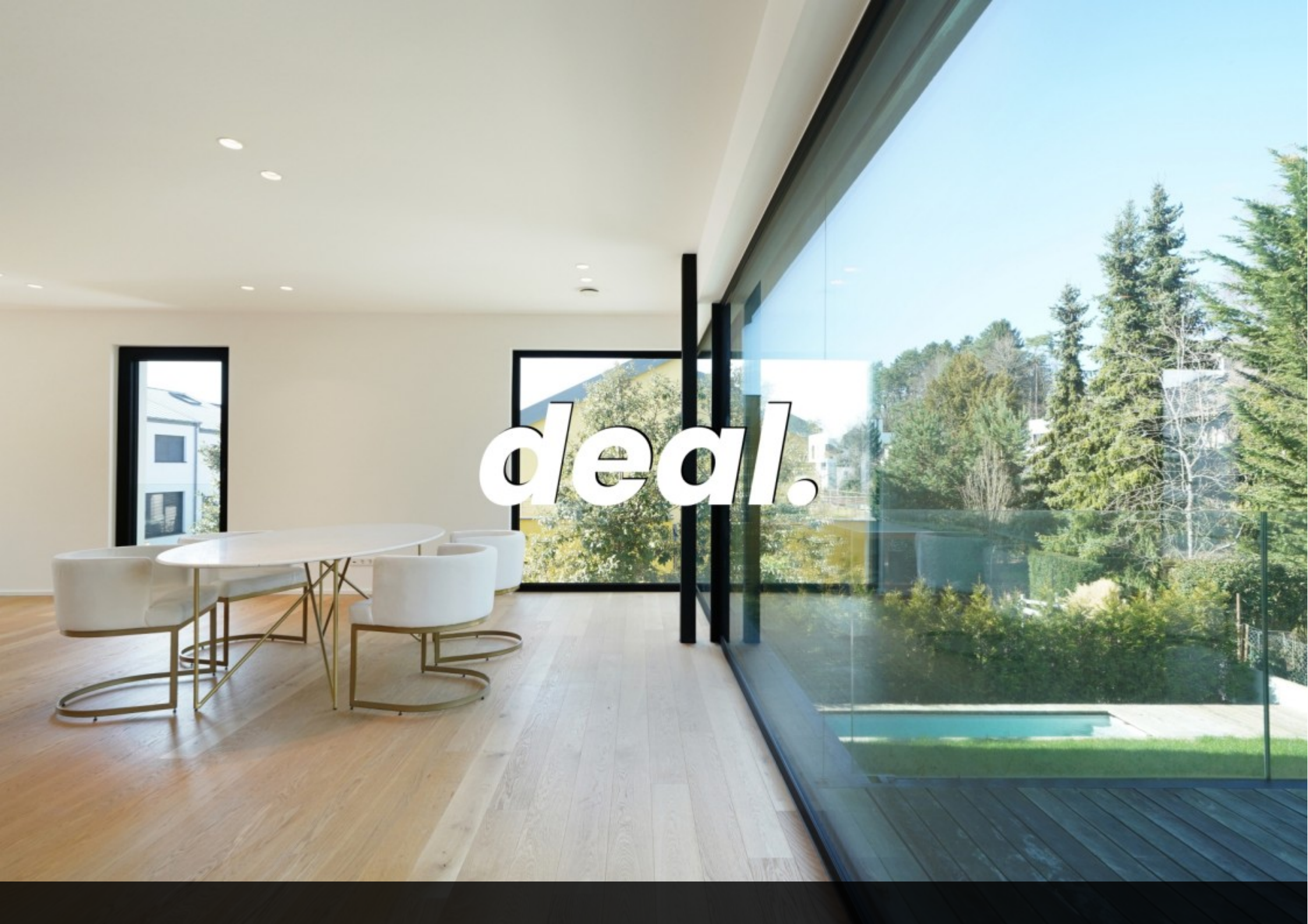
*Fees are paid by the seller. If you need any further information or an estimate of your property, don't hesitate to contact our great team! Supereal. smart real estate services.*

.....  
**À vendre par Supereal. Maison exceptionnelle avec piscine à Bridel !**

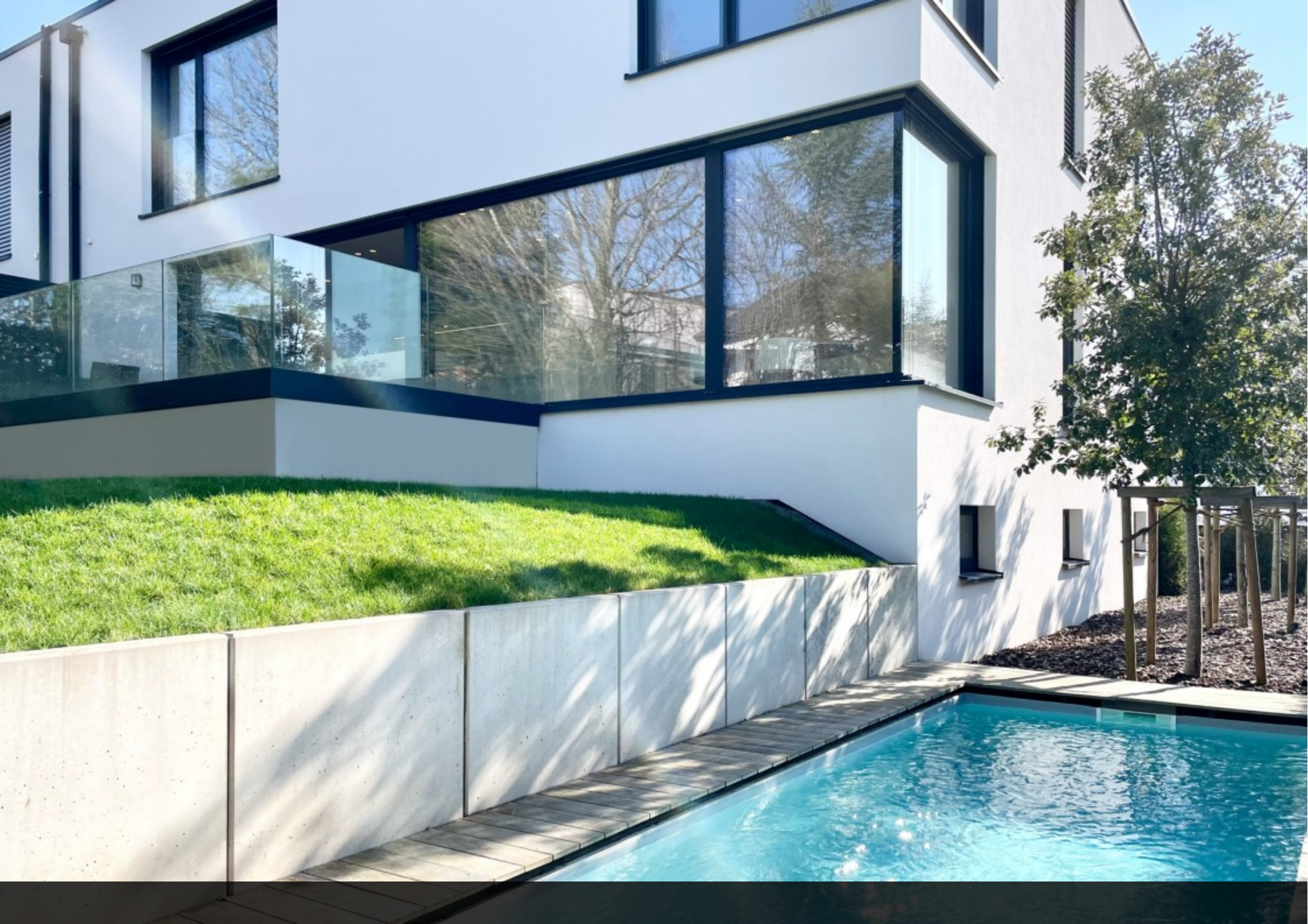
***Cette construction jumelée de 2019 aux prestations haut-de-gamme et aux volumes généreux, compte un total de ± 350m<sup>2</sup> et de ± 255m<sup>2</sup> habitables, sur une parcelle de 4,19 ares au coeur d'un environnement privilégié, calme et verdoyant.***

*Au fond de l'impasse Flamo, elle propose en rez-de-chaussée une entrée avec vestiaire, une pièce de vie de ± 60m<sup>2</sup> inondée de lumière par ses immenses baies vitrées ainsi qu'une cuisine équipée avec accès à une terrasse de ± 20m<sup>2</sup> qui donne sur son un jardin arboré avec piscine chauffée. Sur ce niveau se trouve également une chambre avec salle de douche et un wc séparé.*

*deal.*













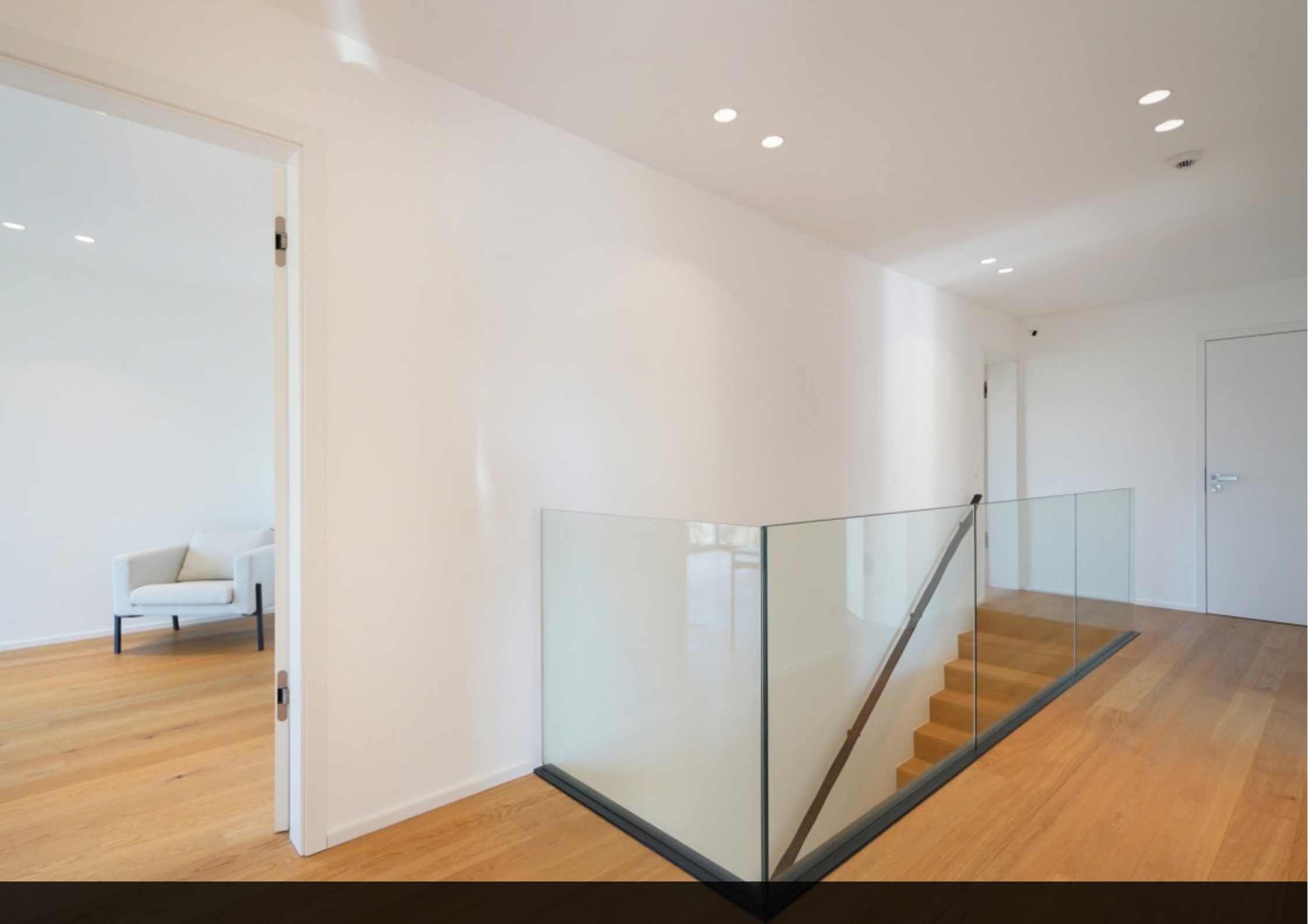


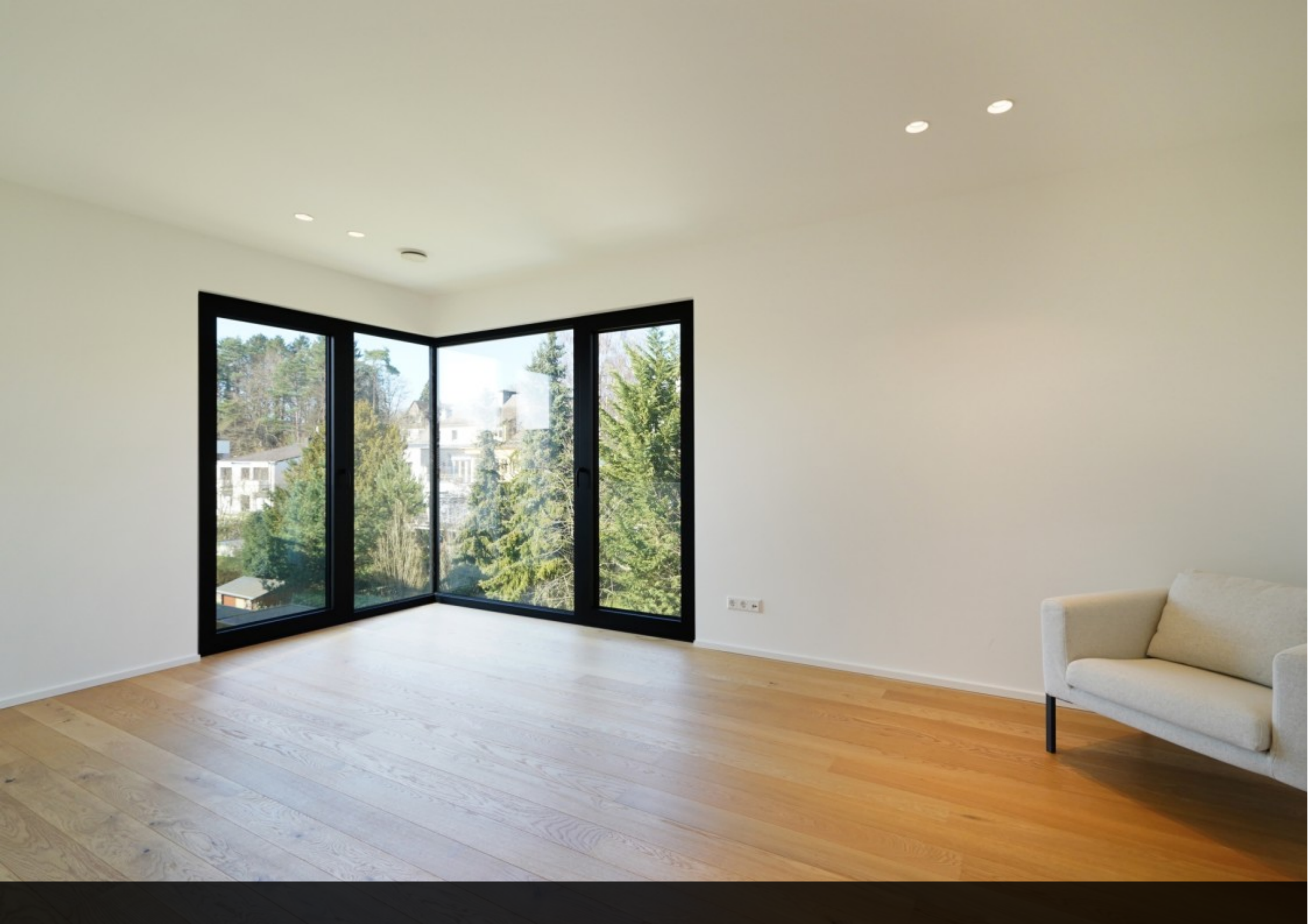






























**supereal.**

*smart real estate services*

*+352 26 26 26 66*

*hello@supereal.lu*

*55 rue de la vallée*

*L-2661 Luxembourg*