

supereal.

deal.



Kopstal

house - 4 bedrooms

370 m² - 19.76 ares

A deal has been signed for this exquisite Four-Bedroom House in a Green Setting in Kopstal!

Situated on a plot of 19.76 ares, this house underwent a total renovation in 2018. Noteworthy for its large openings onto its garden and the surrounding nature, it benefits from a home automation system allowing remote control of numerous amenities such as its blinds and shutters, lighting, reversible heat pump, indoor and outdoor audio system, video surveillance, and alarm system, ...

The garden level is a true relaxation space with a library, home cinema, hammam, sauna, fitness room, and wine cellar. This space provides access to a superb terrace with a jacuzzi, relaxation area, and dining area, which overlooks the rest of the garden and the surrounding forest. Additionally, there is a bedroom, a toilet/laundry room, and storage spaces.

The ground floor offers an entrance leading to a superb integrated dining/living/kitchen area of approximately 100 sqm with terrace access and breathtaking views of the outdoors, a bedroom with a shower room, and a separate toilet.

The upper floor consists of a hall leading to two bedrooms, a large dressing room, and a bathroom.

Its flower-filled and tree-lined garden provides a reception area and a dining area with a summer kitchen.

A large garage for two cars is located in front of the house.

Kopstal is distinguished by its green environment and its proximity to Luxembourg. Schools, nurseries, pharmacies, grocery stores, and sports clubs are less than 5 minutes away by car. A bus line provides easy access to downtown Luxembourg and Bridel.

Fees paid by the seller. If you need any further information or an estimate of your property, feel free to contact our great team! Supereal. smart real estate services.

.....

Un compromis de vente à été signé pour cette sublime maison de quatre chambres dans un écrin de verdure à Kopstal !

Sur une parcelle de 19,76 ares, cette maison a connu une rénovation totale en 2018. Remarquable par ses larges ouvertures sur son jardin et sur la nature environnante, elle bénéficie d'un système domotique permettant le contrôle à distance de nombreux équipements tels que ses stores et volets, son éclairage, sa pompe à chaleur réversible, son système audio intérieur et extérieur, son système de vidéosurveillance et d'alarme, ...

Le rez-de-jardin est un véritable espace de détente avec bibliothèque, home-cinema, hamam et sauna, salle de fitness et cave à vin. Cet espace offre un accès à une superbe terrasse avec un jacuzzi, espace détente et espace repas, qui surplombe le reste du jardin et la forêt environnante. À cela s'ajoutent une

A modern, two-story house with a grey roof and large glass windows is situated on a hillside. The house is surrounded by lush greenery, including palm trees and other tropical plants. In the foreground, there is a stone retaining wall and a paved area with a white wicker sofa. The word "deal." is overlaid in large, white, italicized text across the center of the image.

deal.

















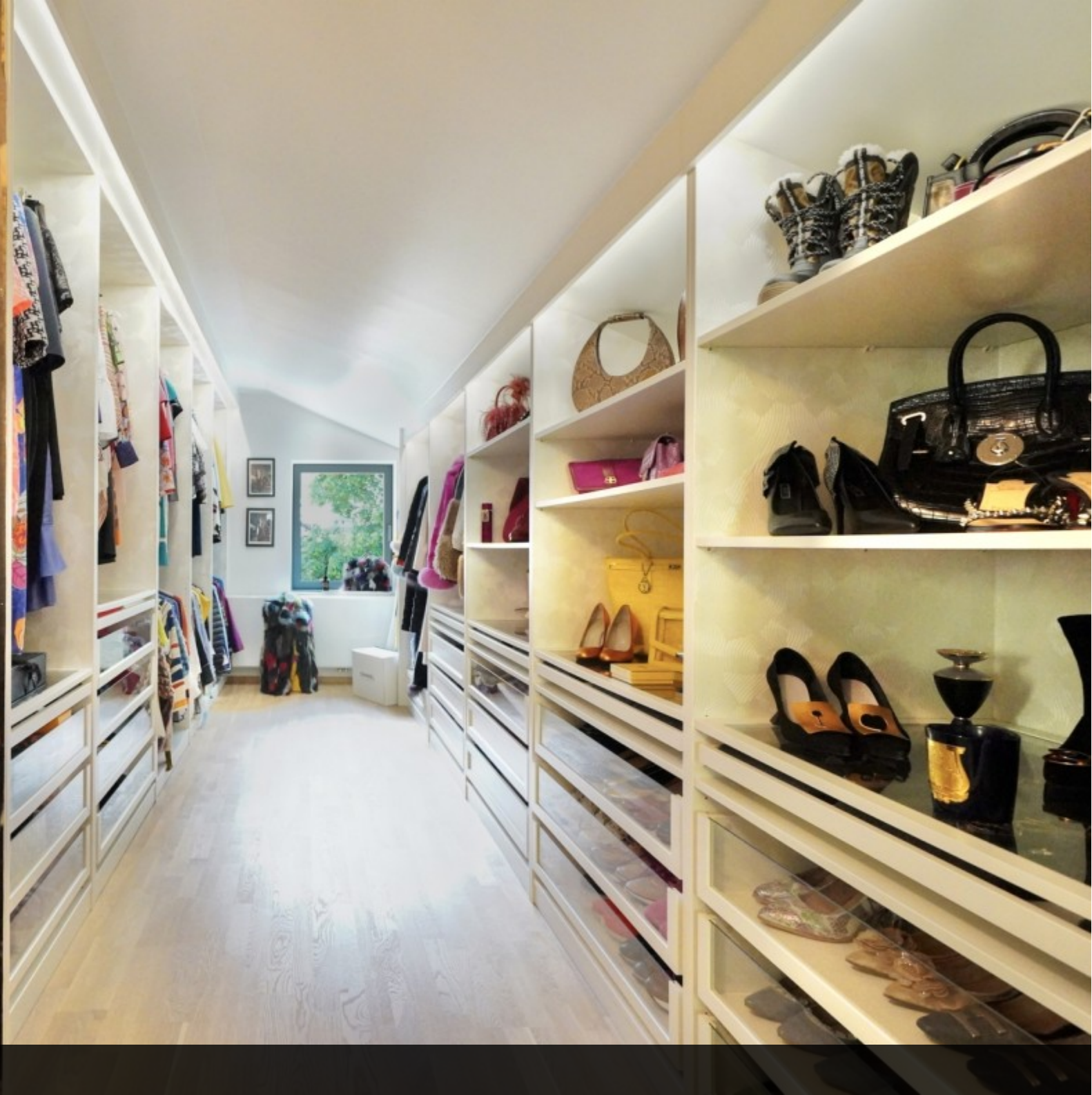


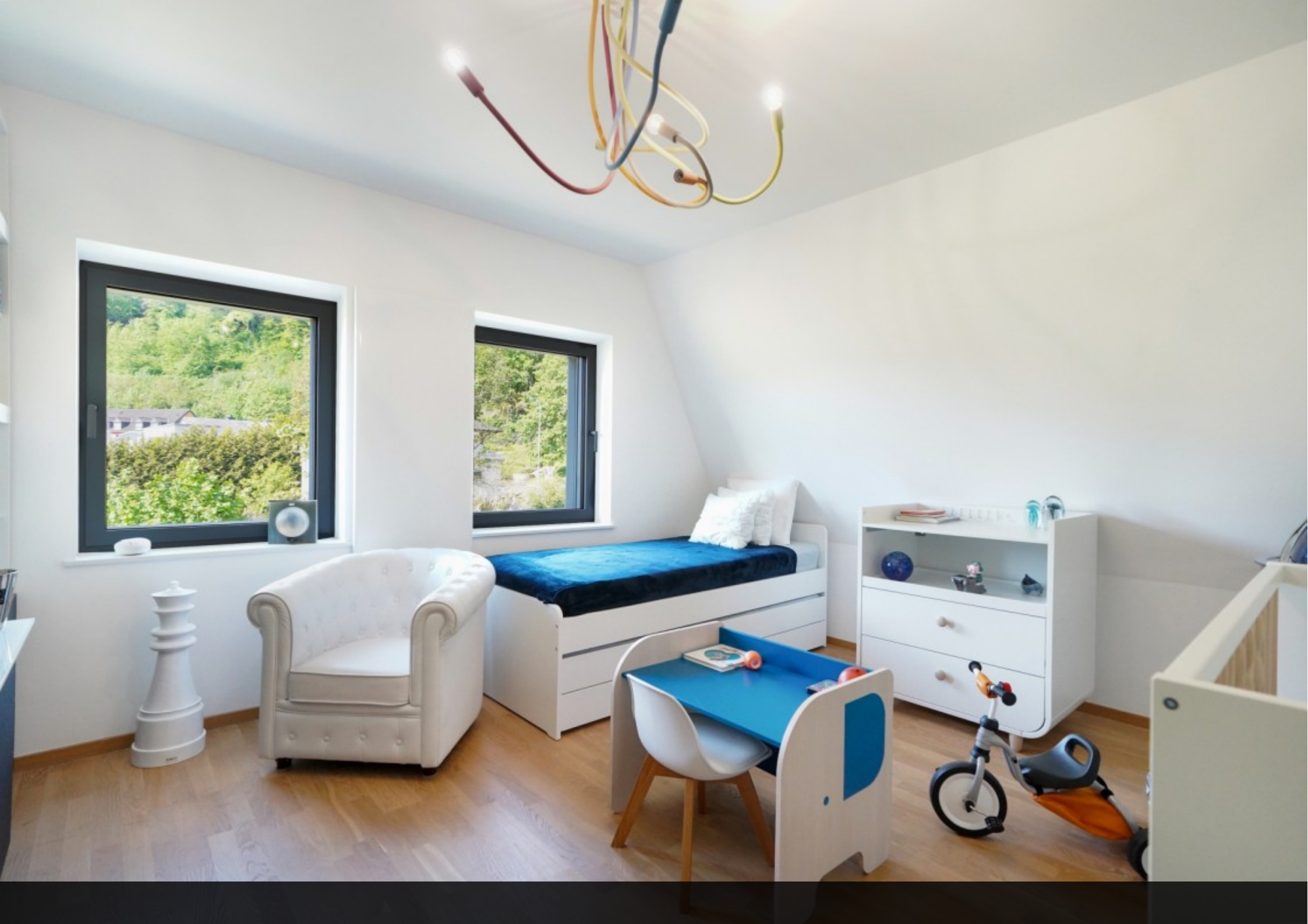
















N°5
CHANEL
PARIS
PARFUM



















supereal.

smart real estate services

+352 26 26 26 66

hello@supereal.lu

55 rue de la vallée

L-2661 Luxembourg