

supereal.



Bridel

house – 4 bedrooms

450 m² – 11.38 ares

6.250.000 €

For Sale by Supereal. Exceptional property in the heart of Bridel!

A true icon of Luxembourgish architecture, “MAD” was designed in 2017 on a 11.38-are plot by Max Bauer in collaboration with CBA. Perfectly harmonizing with its environment and sheltered from prying eyes, no detail has been overlooked.

Nestled in a green oasis, its beige brick facade seamlessly integrates the wooden front door, which serves as an invitation to discover this architectural gem. From the entrance, its identity is revealed through the omnipresence of wood and stone, clean lines, and an openness to the outdoors. The cathedral-like living room, bathed in light and featuring a work by artist Vhils with a face emerging from the strata of a wall, boasts immense bay windows that draw the eye to its equally exceptional garden. Hidden behind movable wooden partitions are a sublime kitchen with ample storage and a lounge/library area.

The garden is a true haven of peace, where remarkable work has been done. As a natural extension of the living room, it offers a dining area under acacia arches, a natural stone terrace of approximately 60 sqm, and a space dedicated to a sumptuous botanical artwork realised by Wirtz International Landscape Architects.

Upstairs, a corridor marked by its openness to the outdoors and a skylight leads to a master suite with dressing room, marble bathtub, sink, shower, and toilet, as well as three independent bedrooms each with closets and a shower room with toilet, like hotel rooms. Wood and stone are used again to ensure perfect harmony. The bathrooms are hidden behind smoked glass partitions, adding warmth and intimacy.

In the basement, a wellness area comprising an 18-meter pool, sauna, fitness room, and shower room contributes to the utmost comfort. There is also a laundry room, a cellar, and a technical room.

The property has a garage for three cars and enough space for four more cars outside.

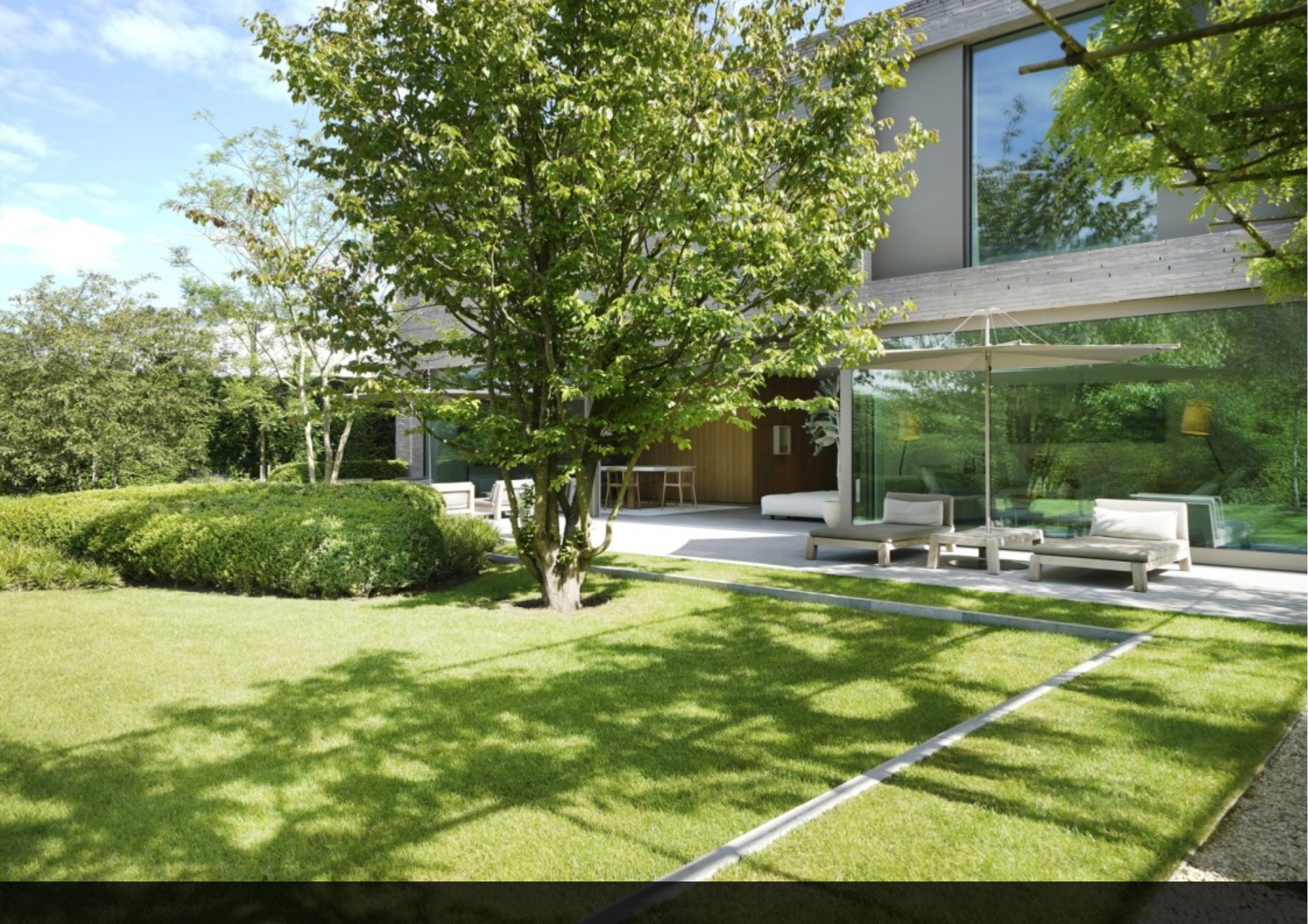
A large surface of photovoltaic panels allows for near self-sufficiency in electricity.

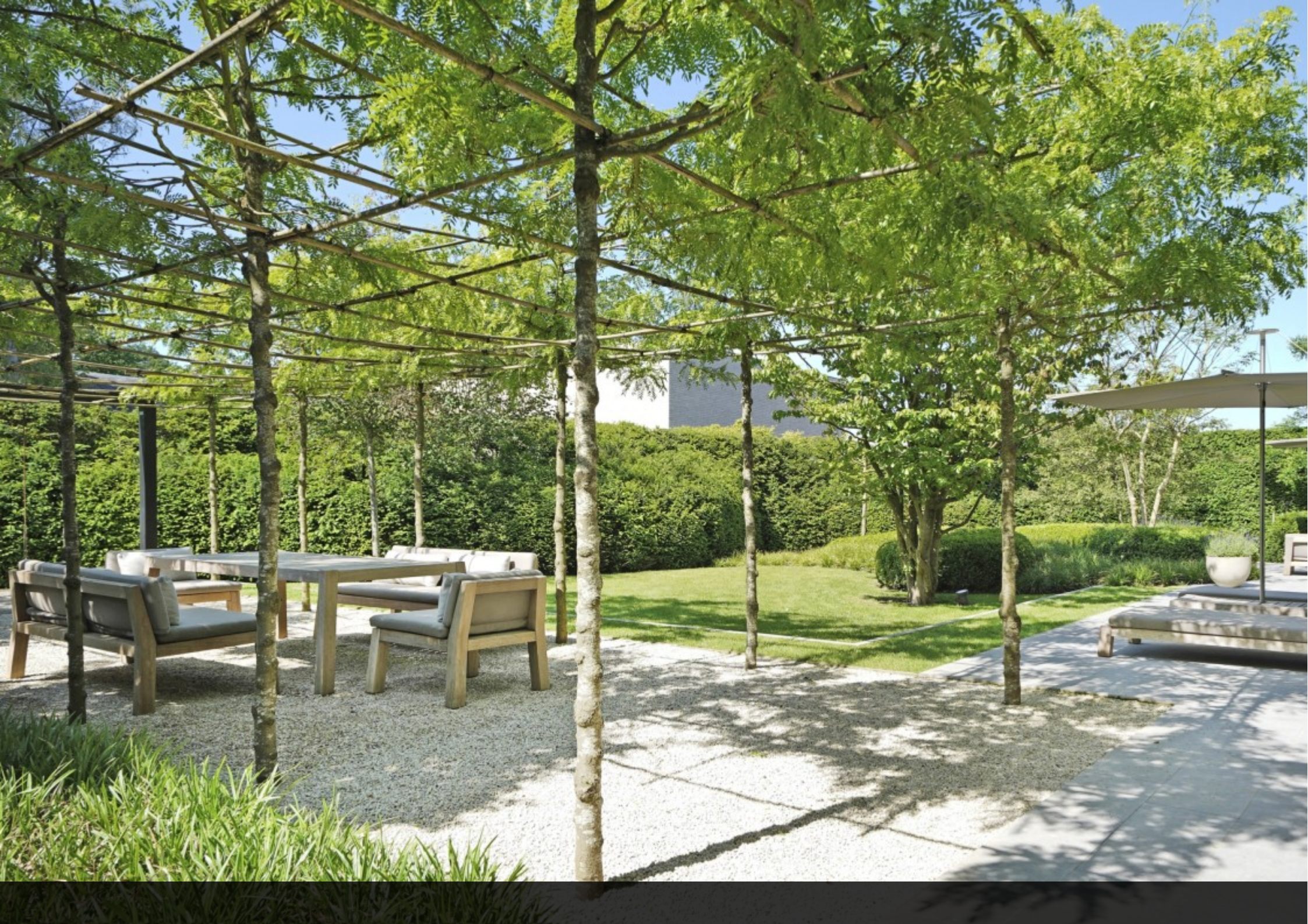
Bridel is one of the most sought-after places for its calm and peaceful environment, with nature nearby and quick access to shops, schools, and daycares. The city center of Luxembourg and Kirchberg are also accessible within minutes.

Fees paid by the seller. If you need any further information or an estimate of your property, feel free to contact our great team! Supereal. smart real estate services.

.....



















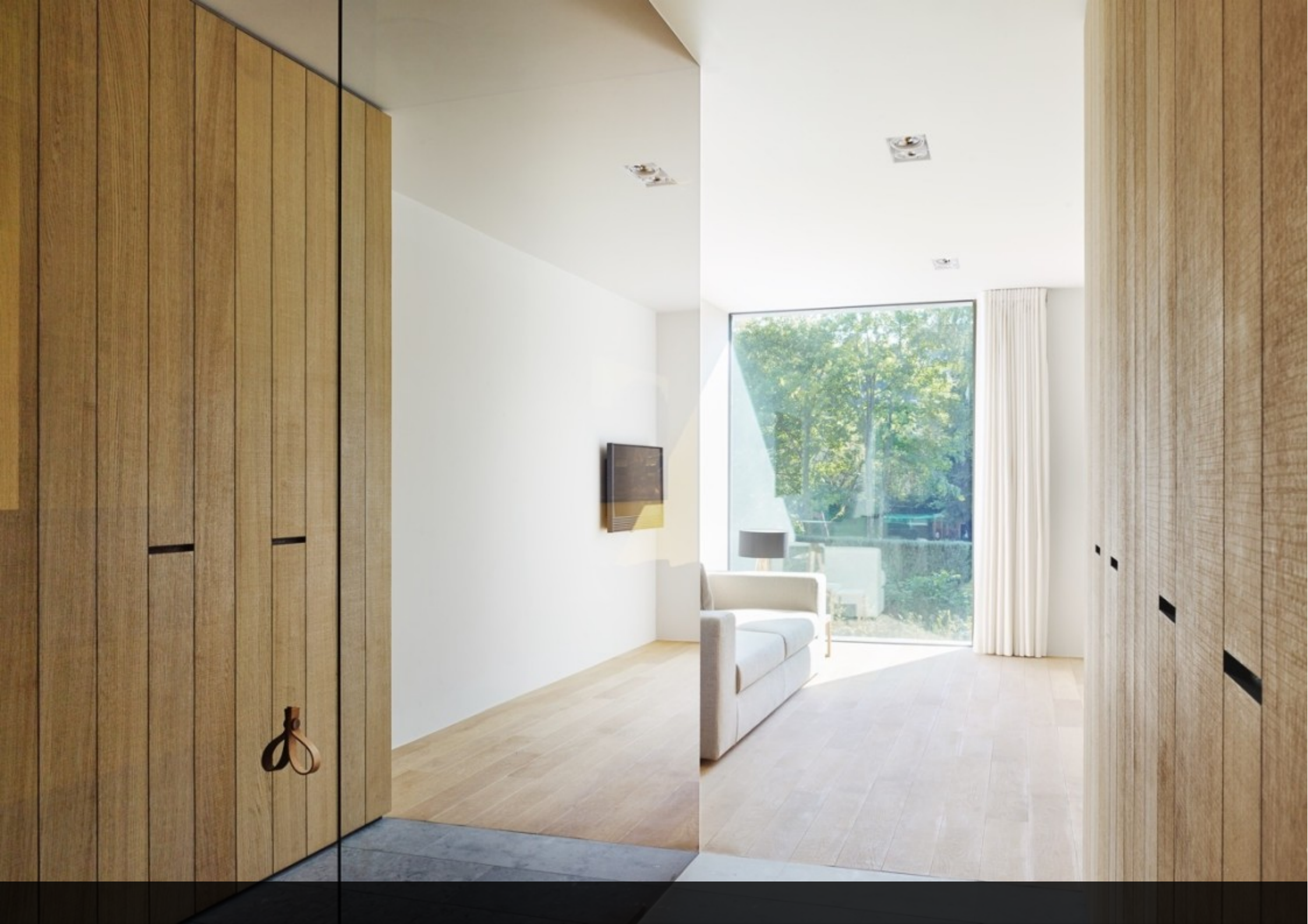






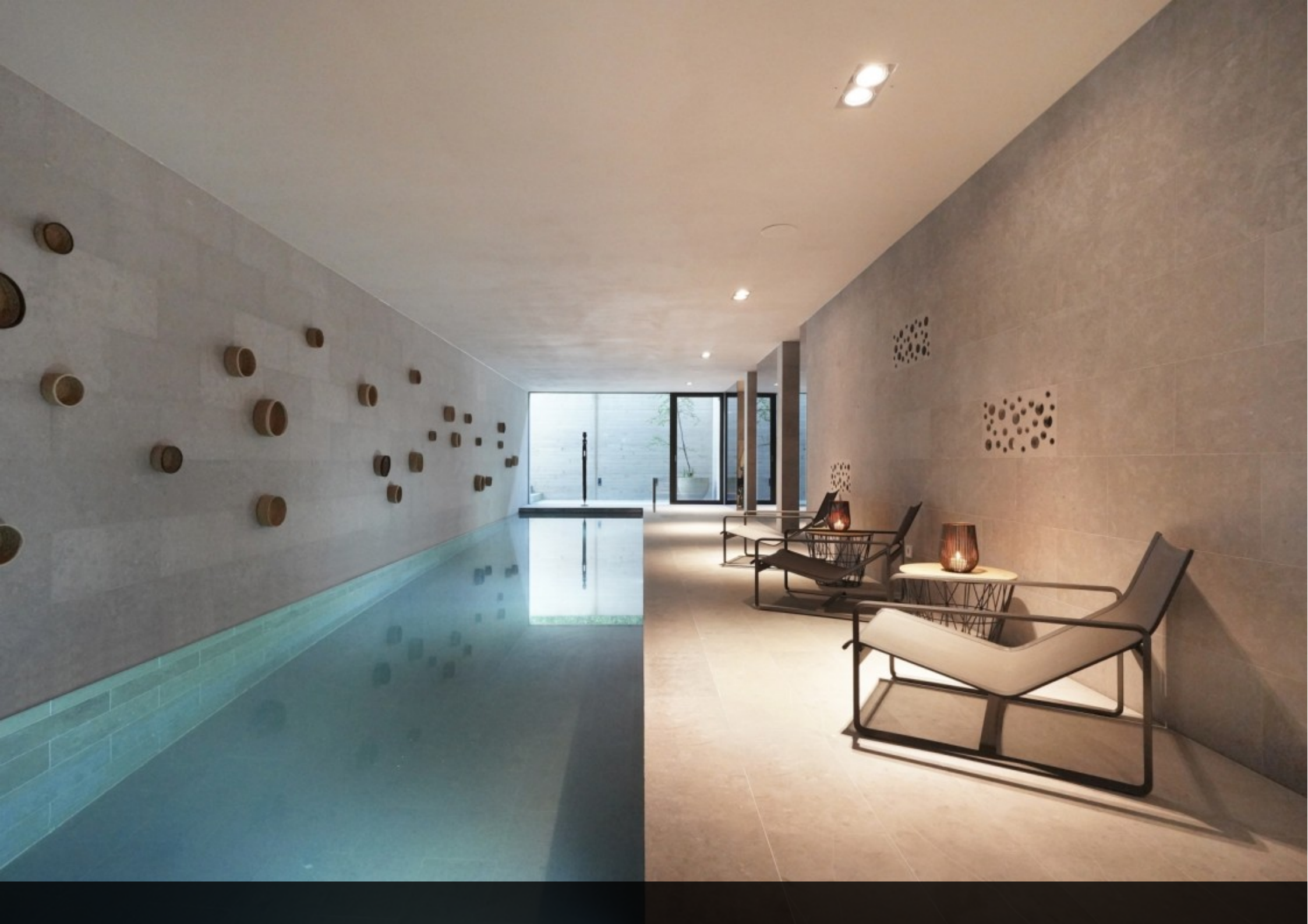












supereal.

smart real estate services

+352 26 26 26 66

hello@supereal.lu

55 rue de la vallée

L-2661 Luxembourg